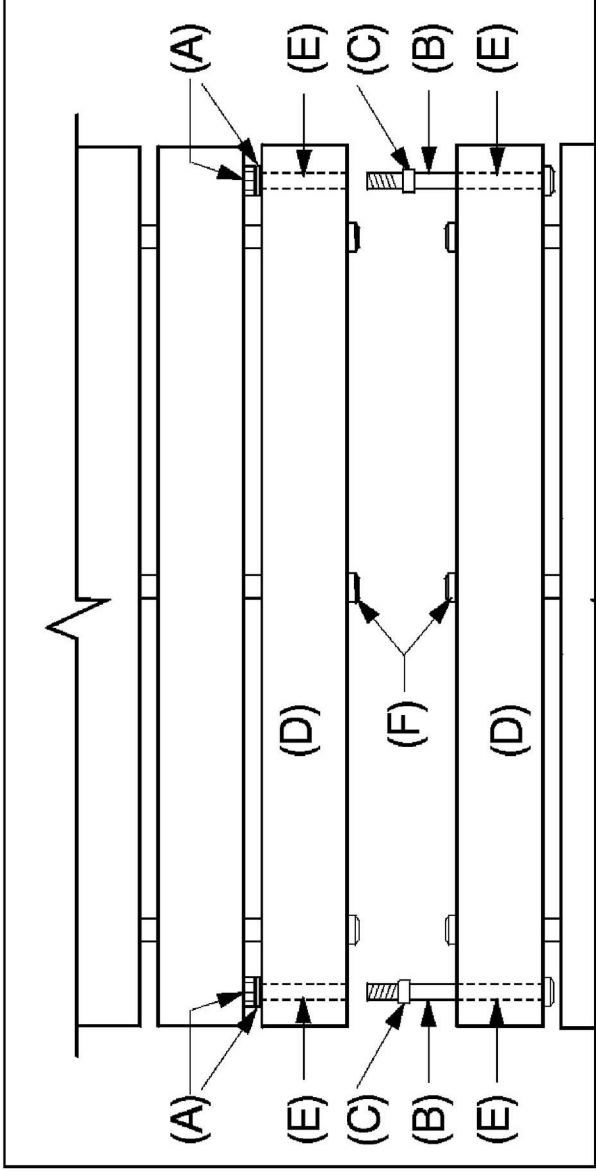


MODULAR WALKWAY SYSTEMS

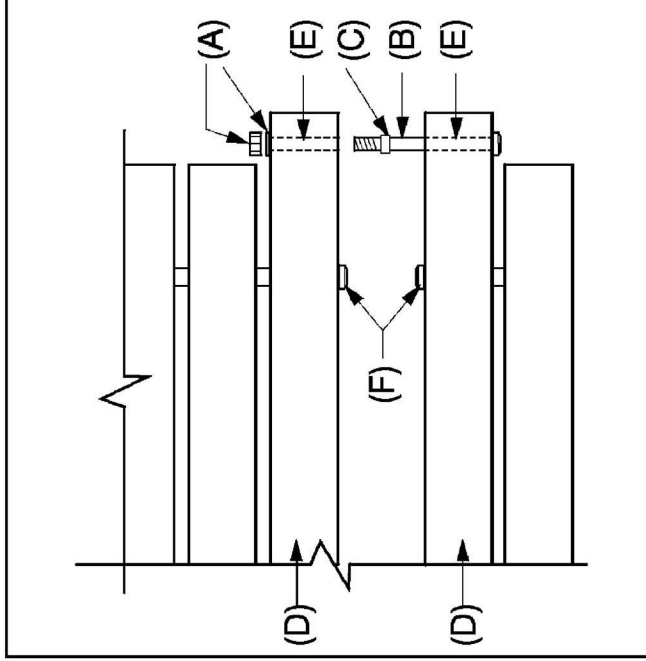
Installation Instructions

Inboard & Outboard Connectors

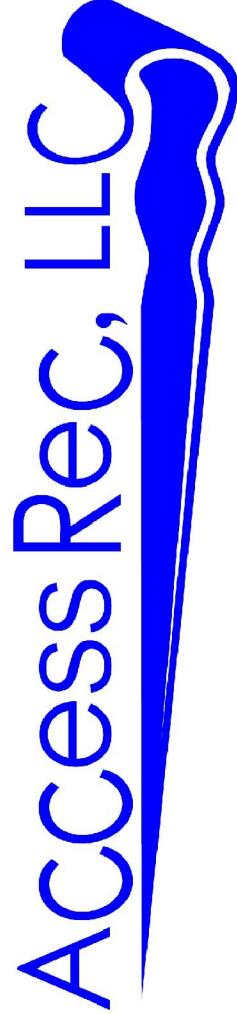


■ "INBOARD" CONNECTORS

1. Remove the **nut & washer (a)** from the **bolt (b)**. Leave the **spacer (c)** in place on the **bolt**.
2. Align the **endboards (d)** of adjoining walkway sections and insert the **bolt** through the corresponding **holes (e)** in the **endboards** with the **spacer** between the **endboards**.
3. Tighten the **nut & washer** over the **bolt** until the **spacer** is just snug against both **endboards**. Do not over tighten.
4. Check to insure that at least a 1/8" space exists between the **rods and nuts (f)** at the end of each walkway section.
5. If the space is less than 1/8", back off on the **nuts (a)** and adjust the position of the walkway sections until a 1/8" space is established.



■ "OUTBOARD" CONNECTORS



AccessRec, LLC.
 55 Park Slope
 CLIFTON, NJ 07011
 Ph: +1-201-321-8506
 Fax: +1-201-624-7007
 www.AccessRec.com