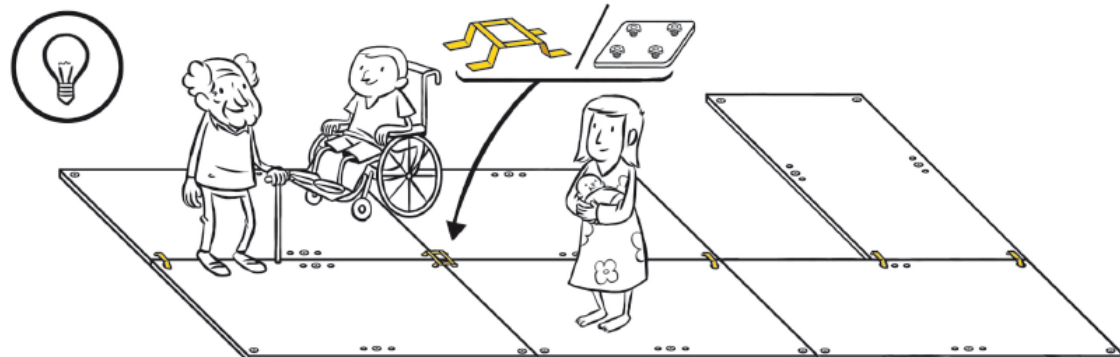
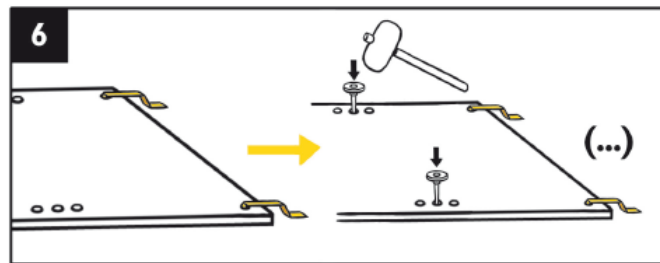
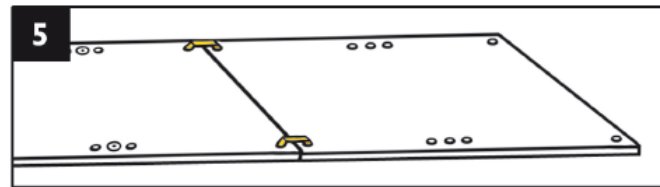
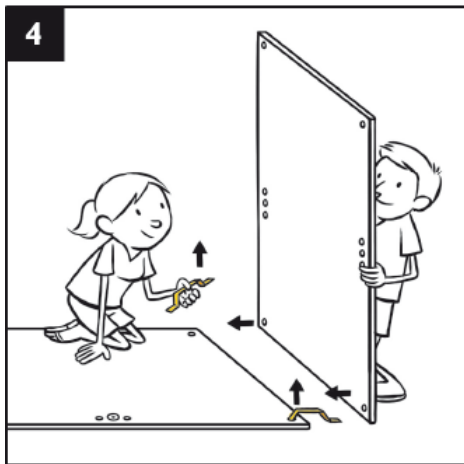
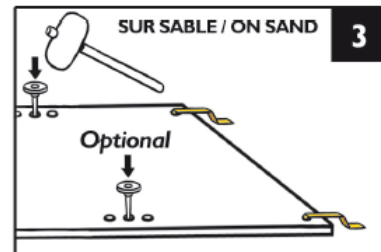
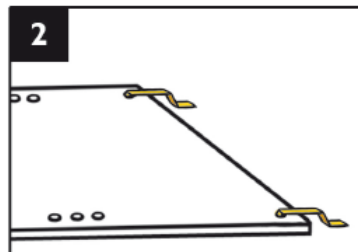
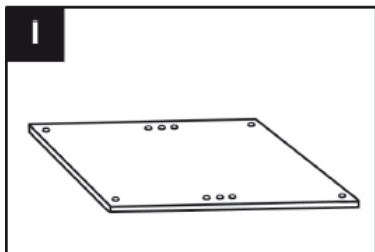
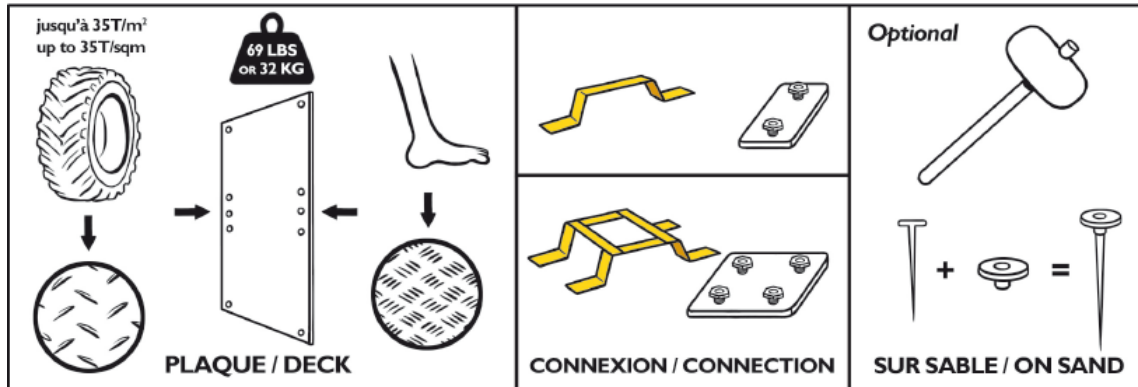


ACCESSDECK®

Installation, Removal & Maintenance Instructions





1. Ground Preparation Material Staging - Little or no ground preparation is required prior to installation of AccessDeck®, but ground areas must be relatively level and large rocks or obstacles must be removed. AccessDeck® can be used on mud, grass, sand and other surfaces, but weight-loading capacities will be reduced on softer surfaces, geotextiles may be used on very soft surfaces to help distribute weight and provide additional support and weight loading. AccessDeck® is not a bridging material and should never be used to cross or span large gaps, gullies or chasms. It is recommended that pallets of AccessDeck® be staged as close to the area of operation to minimize the amount and distance of manual transport. It is possible to transport AccessDeck® using forklifts, removing each sheet and placing it into position, creating a roadway over which the forklift can then move further sheets to be installed.
2. Lay one mat flat on the ground. Insert the short end of a single AccessLink down through each corner hole on the narrow end. Slide the ends of each AccessLink under the mat with one end attached and one unattached.
3. Feel free to anchor your deck down to the ground using our optional spikes with grommets
4. Tip a second mat on its side and slide the unattached end of each AccessLink through corresponding holes on the tipped mats.
5. Lay the second mat down flat, end-to-end with first mat. You now have two mats connected with two single AccessLinks, 4' end-to-end to form a 12' path (you also can connect the mats side to side if you want a wider track using the same procedure. In this case we recommend the use of three AccessLinks: two Accesslinks in each corner hole and one in the middle hole).
6. Repeat step four to make a track of unlimited length.

Installing a Double steel AccessLink**

1) Lay two mats flat on the ground side by side. Insert the short ends of a double AccessLink into the corresponding corner holes. Insert short ends of single AccessLinks in the outside edges.

Slide ends of the double and single AccessLinks under the mat.

2) Tip the two mats on their sides, side-by-side and slide the other ends of double AccessLinks and the two single AccessLinks through corresponding holes on the tipped mats. Lay both mats down flat, end-to-end with first mats. You now have four mats connected together at the common corners, in the center, and at the outside corners to form a working area.

3) Repeat step two to make a track of unlimited length and width.

* Single links connect two mats together end-to-end or side-to-side.

** Double links connect four mats together at the common corner.

Installing a Single* connector bolt





- 1) Lay one mat flat on the ground. Insert the connector's bolt up through the hole from under the mat. Keep the washer and bolt in your hand or aside to secure the mat to the connector from the top of the mat. Use the metal plate between the top of the mat and the washer if your site requires it as it may help keeping the pathway as flat & straight as possible.
- 2) Lay the second mat down on the side of the previous mat and slide it through the other side of the plastic connectors then secure them using the metal plate, washer and bolt. You now have two mats connected together with two single AccessLinks, 4' end-to-end, to form a track 16' long (you also can connect the mats side to side if you want a wider track, using the same procedure. In this case we recommend the use of three AccessLinks: two Accesslinks in each corner hole and one in the middle hole).
- 3) Repeat step two to make a track of unlimited length.

Installing a Double connector bolt**

Double plastic AccessLink is only used to connect four corners of mats together.

- 1) Lay two mats flat on the ground. Insert the connector's bolt up through the holes from under the mats corners. Keep the washer and bolt in your hand or aside to secure the mat to the connector from the top of the mat. Feel free to use the metal plate between the top of the mat and the washer if your site requires it.
- 2) Lay the third and fourth mats down on the side of the previous mats through the other side of the plastic connectors then secure them using the metal plate, washer and bolt. You now have four mats connected together with one double AccessLink, 8' end-to-end, to form a track 16' long.
- 3) Repeat step two to make a track of unlimited length.



Disassembling AccessDeck®

To disassemble AccessDeck® with AccessLinks, simply tip the outermost sheet of AccessDeck® on its side, releasing the AccessLink, and slide the tipped sheet away from the adjacent sheet. Remove the AccessLink from the adjacent mat by tipping it sideways and sliding out. Repeat as necessary.

Transport, Storage and Maintenance

AccessDeck® requires little maintenance and can be transported compactly. Its dimensions fit in the back of a pickup truck. Clean AccessDeck® sections using standard cleaning fluids and a hard bristle brush. Alternatively, a pressure washer may be used for deeper cleaning. Sections may be stacked on pallets (suggested 30 mats per pallet), banded and transported together using a forklift. AccessDeck® may be stored indoors or outdoors and may be stacked as high as can be safely accommodated.

AccessRec Team thanks you for choosing AccessDeck® for your portable roadway and other ground surface needs.